

# OUR PROGRAMMING



Felton  
institute SEEDS

🌐 [felton.org/seeds](https://felton.org/seeds)

✉ [seeds@felton.org](mailto:seeds@felton.org)

🏠 2730 Bryant St., 2F, San Francisco, CA

Supporting Early Education,  
Development & Socialization

*Providing vital support for families  
with children aged 0-5 who have  
disabilities or developmental delays.*

# TABLE OF CONTENTS

01	About SEEDS: Program Introduction	08	Developmental Playgroup Activities
02	Key Aspects	10	Care Coordination
04	Programming Overview	11	Felton's Parents Connect (FPC)
05	Developmental Playgroups	13	Home Connections
06	Bridging the Gap		
07	Developmental Playgroup Goals		



# ABOUT SEEDS



## A BRIEF INTRODUCTION TO OUR PROGRAM

Felton's Supporting Early Education, Development & Socialization (SEEDS) program provides vital support for families with children aged 0-5 who have disabilities or developmental delays.

Established in 2024 with funding through the San Francisco Department of Early Childhood, our two primary service areas include **Care Coordination** and **Developmental Playgroups**, all designed to address the unique needs of children and their families.



# KEY ASPECTS

## WHO WE SERVE

We serve **San Francisco** families with children from **birth to five years old** identified through the Ages and Stages Questionnaire (ASQ) as having a developmental delay or developmental monitoring need. Our Developmental Playgroups provide a space for children with mild to moderate developmental delays who are not yet eligible for formal intervention through local regional centers or school districts. *Siblings or preschoolers transitioning from toddler classrooms are welcome to participate.*

## LANGUAGES

We provide services to families in **English** and **Spanish**, with additional language capacity provided through interpretation services.

## OUR LOCATIONS

SEEDS services are available at Felton's Early Care & Education (ECE) centers and the onsite Resource Centers, including Felton's Family Resource Centers. We provide accessible care to families across San Francisco.

FELTON.ORG/SEEDS

Felton  
institute



# Felton institute ECE

## Early Care & Education



Felton Institute's Early Care & Education (ECE) programs provide responsive developmental early care and education and family support services in an equitable, nurturing, challenging and inclusive environment that addresses the medical, social and educational needs of the child and family, thereby helping them develop a solid foundation for lifelong development, family economic success and hope for a successful future.

FDC

### FAMILY DEVELOPMENTAL CENTER (FDC)

2730 Bryant Street, 1st Floor  
San Francisco CA, 94110  
(415) 282-1090

Hours: 7:30 am - 4:30 pm  
Children served: Birth - 5 Years

License: 380 505 534  
License: 380 505 568

SLC

### SOLMAR LEARNING CENTER (SLC)

199 Shotwell Street,  
San Francisco CA 94103  
(415) 474-1809

Hours: 7:30 am - 5:30 pm  
Children served: Birth - 4 Years

License: 380 505 534  
License: 380 505 568

STC

### SOJOURNER TRUTH CENTER (STC)

1 Cashmere Street,  
San Francisco CA, 94124  
(415) 401-1379

Hours: 7:30 am - 5:30 pm  
Children served: Birth - 3 Years

License: 384 002 728

MLK

### DR. MARTIN LUTHER KING JR. CENTER (MLK)

200 Cashmere Street,  
San Francisco CA, 94124  
(415) 401-1377

Hours: 7:30 am - 5:30 pm  
Children served: 2 - 5 Years

License: 384 002 728

FLC

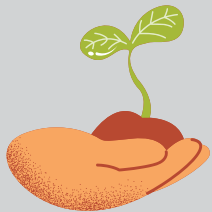
### FELTON LEARNING CENTER (FLC)

300 Leland Avenue,  
San Francisco CA, 94134  
(415) 401-1378

Hours: 7:30 am - 5:30 pm  
Children served: Birth - 4 Years

License: 384 002 729

# HELPING CHILDREN BLOOM



Felton institute

FELTON.ORG/SEEDS

## Felton institute **SEEDS**

Supporting Early Education,  
Development & Socialization

Provides vital support for families with children aged 0-5 who have disabilities or developmental delays through developmental playgroups, care coordination, facilitation of the 'Felton's Parents Connect (FPC)' peer support groups, and provision of at-home learning resources.





Felton  
institute

FELTON.ORG/SEEDS

# PROGRAMMING OVERVIEW

We provide comprehensive support and guidance through:

## DEVELOPMENTAL PLAYGROUPS

Inclusive sessions for young children with moderate developmental delays, designed to bridge early developmental gaps.

## FELTON'S PARENTS CONNECT (FPC)

Peer support groups and workshops, with guest specialists for expert guidance.

## HOME CONNECTIONS

Weekly materials, tailored strategies, and activities to support learning at home.

## CARE COORDINATION

Customized plans to address developmental needs, with access to therapy, education, and community resources.

- Case Management
- Linkage Services
- Service Navigation
- Family Advocacy



PROVIDING VITAL SUPPORT FOR FAMILIES WITH CHILDREN AGED 0-5 WHO HAVE DISABILITIES OR DEVELOPMENTAL DELAYS.

# DEVELOPMENTAL PLAYGROUPS

- **PLAYGROUP LOGISTICS**

Felton’s Developmental Playgroups are 90 minutes long and occur twice a week for a 12-week cycle on-site at one of Felton’s inclusive Early Care and Education (ECE) center locations.

- **EARLY DEVELOPMENT SUPPORT**

Felton’s Developmental Playgroups are designed for children from birth to five years old who are experiencing moderate developmental delays but may not meet eligibility for formal intervention or are awaiting approval for Golden Gate Regional Center (GGRC) services.

- **DEVELOPMENTAL SCREENING**

Children undergo developmental screenings at entry using the Ages and Stages Questionnaire (ASQ), to monitor progress and address developmental concerns.

- **ENGAGING PLAY SESSIONS**

These inclusive, play-based sessions are facilitated by two Early Interventionists, focusing on areas of early childhood development through engaging, meaningful activities.



## Playgroup: CLEMENTINES

Date: Mondays and Wednesdays

Time: 10:30 AM – 12:00 PM

Location: Sojourner Truth Center (STC)

Address: 1 Cashmere Street, San Francisco

Ages: Under 18 months at the start of the group



## Playgroup: APPLES

Date: Tuesdays and Thursdays

Time: 4 - 5:30 PM

Location: Family Developmental Center (FDC)

Address: 2730 Bryant Street, San Francisco, CA

Ages: 18 months – 5 years at the start of the group



## Playgroup: BANANAS

Date: Tuesdays and Thursdays

Time: 10:30 AM - 12 PM

Location: Family Developmental Center (FDC)

Address: 2730 Bryant Street, San Francisco, CA

Ages: 18 months – 5 years at the start of the group

*Register for a FREE  
developmental playgroup  
online at [Felton.org/SEEDS](https://felton.org/SEEDS)*

# BRIDGING THE GAP

## BUILDING STRONG FOUNDATIONS THROUGH PLAY

Our goal is to bridge the gap and support children's growth and development during these crucial early years. We achieve this through **comprehensive screenings** and **individualized goals**.



Felton institute

FELTON.ORG/SEEDS



# GOALS

## DESIRED OUTPUTS AND OUTCOMES

Our Developmental Playgroups provide intentional time where peer-peer and peer-adult social interactions are facilitated by two Early Interventionists in a 1-3 adult/child ratio. Our playgroups focus on developmentally appropriate, play-based activities that target all areas of early childhood development.

- **DEVELOPMENTAL MONITORING**

Participating children receive developmental screenings and have their development monitored and supported by an Early Interventionist, who intentionally designs activities that enrich each child's learning.

→ *Children learn, grow, and progress in their development.*

- **RESPONSIVE INTERACTION & PLAY**

Parents learn more about their child's development and ways to support their growth through responsive interactions and play.

→ *Parents use responsive interactions and play with their children more.*

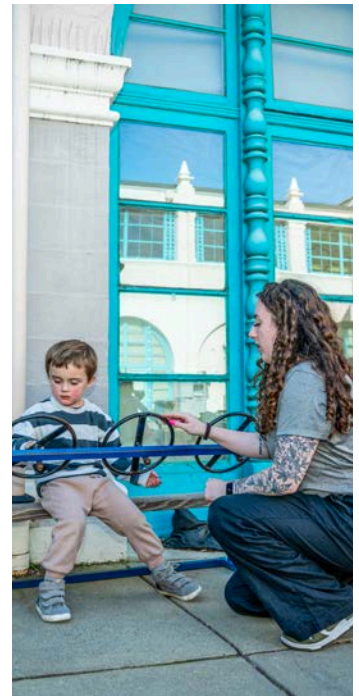
- **PEER SUPPORT**

Parents receive support from other parents and learn through others' lived experiences.

→ *Parents feel more supported.*

- **RESOURCE LINKAGE**

Each family will receive care coordination and case management services to ensure resource and navigation → *Families will have access to the resources they need.*



# PLAYGROUP ACTIVITIES



## THE CREATIVE CURRICULUM

We use *The Creative Curriculum*, which is also implemented in our general ECE programs. This curriculum emphasizes the importance of routines (hellos and goodbyes, handwashing, mealtimes, etc.) as critical learning moments, aligning with our Activity-Based Intervention approach. Embedded instruction within play-based activities allows us to meet the individual developmental goals of each child.



### GOALS

Each child has three developmental goals created with their ASQ (Ages and Stages Questionnaire) results, input from their family, and in tandem with existing intervention plans (e.g., IFSP goals or IEP goals). These goals are naturally embedded into the playgroup's routines.



### CURRICULUM

Weekly songs and activities are centered around a book. Access to materials is sent out in a weekly announcement using the Remind app.



### GROUP CIRCLE TIME

Caregivers and children participate in a welcome and closing circle time to create community, strengthen child-caregiver relationships, and provide intentional modeling opportunities on how to individually engage each child in song and reading activities.



### FAMILY COMMUNICATION

Families have communication with the Early Interventionists in person before and after each playgroup, and through the Remind and Sparkler apps. In addition, photos and artwork may be shared.

# Felton institute SEEDS

Supporting Early Education,  
Development & Socialization

## HELPING CHILDREN BLOOM



### REGISTER FOR A DEVELOPMENTAL PLAYGROUP

*Our 12-week program offers 90-minute, twice-weekly sessions for children (0-5) with moderate delays, focusing on growth through inclusive, play-based activities.*

REGISTRATION INFO:

[FELTON.ORG/SEEDS](https://felton.org/seeds)

# CARE COORDINATION



## ENSURING FAMILIES RECEIVE COMPREHENSIVE SUPPORT

Personalized plans are created with families to address their child's developmental needs. We provide access to resources such as therapy, education, and community services, collaborating with the Golden Gate Regional Center (GGRC) to develop actionable goals.

### CASE MANAGEMENT

Ongoing guidance helps families understand the early intervention system. We assist with paperwork, service coordination, and accessing community resources to support their child's development.

### LINKAGE SERVICES

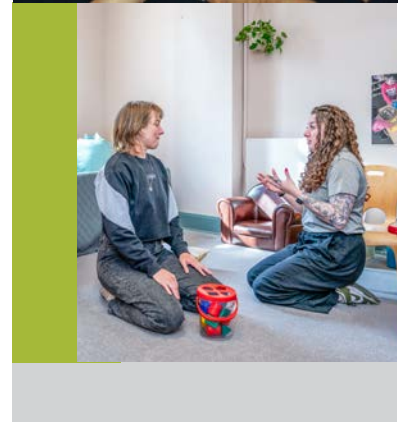
Connecting families to partners such as Support for Families of Children with Disabilities, facilitating referrals, and providing ongoing support to ensure they can access the necessary services. We also provide linkage to other necessary services that benefit families such as food, housing assistance as well as, if needed, support with mental health and crisis and emergency support.

### SERVICE NAVIGATION

We help families understand and access services approved by GGRC, the San Francisco Unified School District (SFUSD), or other early childhood education (ECE) centers.

### FAMILY ADVOCACY

Empowering families to advocate for their child's needs during the Individualized Family Support Plan (IFSP) or Individual Education Plan (IEP) process is central to our approach. We equip families with the knowledge to navigate systems confidently.



# FELTON'S PARENTS CONNECT

## A SPACE TO CONNECT WITH OTHERS PARENTS FACING SIMILAR CHALLENGES

Facilitated by Parent Fellows along with Felton staff, these sessions feature rotating guest specialists or community partners.

Felton's Parents Connect (FPC) aims to:



Build a supportive,  
parent-led community.



Provide expert consultation  
on accessing services and  
navigating systems.



FELTON.ORG/SEEDS Felton institute

# PARENTS CONNECT: TOPICS



**PLAY. GROW.  
THRIVE. TOGETHER.**



Topics explored in Felton's  
Parents Connect (FPC) include:



## **PARENT/PEER-TO-PEER SUPPORT GROUPS**

Spanish and English support groups, groups for parents of children with special needs or those focusing on social-emotional development.



## **PARENT/CHILD INTERACTIVE GROUPS**

Infant massage, expressive arts for young children, and play-based learning groups.



## **CURRICULUM-BASED PARENTING WORKSHOPS**

Classes like Attachment Vitamins, which focus on early childhood attachment.



## **EARLY LITERACY ACTIVITIES**

Social-emotional development, understanding IFSP/IEP, supporting children with special needs, Autism spectrum support, and online modules from "Help is in Your Hands"

# HOME CONNECTIONS



Home Connections extends the learning from both the developmental playgroups and Felton’s Parents Connect (FPC) into the home environment throughout the week, providing families with a variety of resources and activities.

Each week, families may receive:

- **READ-ALoud LINKS**

Access to weekly read-aloud materials in both English and Spanish featuring the books read during playgroups.

- **ACTIVITY GUIDES**

Activities associated with the read-aloud books, using readily available home materials.

- **SONG LYRICS SHEETS**

Lyrics to songs sung during circle times to encourage at-home singing and interaction.

- **ASQ ACTIVITY SHEETS**

Parents receive these materials during screenings, offering further guidance for supporting their child’s development.

- **HANEN APPROACH**

Therapists guide parents in supporting language development.

- **KIMochis® ACTIVITIES**

Social-emotional learning tools may be introduced by Social Emotional Learning Specialists.

- **“HELP IS IN YOUR HANDS” MODULES**

Evidence-based early intervention resources from the Early Start Denver Model (ESDM), especially for children with Autism.

- **PERSONALIZED STRATEGIES**

Early Interventionists provide tailored strategies for home activities after each playgroup session.





**Service Area:**

The City and County of San Francisco

**Hours (Mon-Fri):**

8:30 AM – 4:30 PM

*Evening and weekend programming  
by appointment only.*

 **SAN FRANCISCO OFFICE**

Family Developmental Center (FDC)  
2730 Bryant Street, 2nd floor,  
San Francisco, CA 94110

 **CALL FELTON INSTITUTE**

(415) 474-7310, and ask for “SEEDS”

 **WEBPAGE**

[felton.org/seeds](http://felton.org/seeds)

*Felton Institute is a 501(c)(3) non-profit  
under EIN 94-1156530.*



PROVIDING VITAL SUPPORT FOR  
FAMILIES WITH CHILDREN AGED  
0-5 WHO HAVE DISABILITIES OR  
DEVELOPMENTAL DELAYS.



San Francisco Department of  
**Early Childhood**

**Early Connections**

Care. Play. Grow.

*Felton Institute's Supporting Early Education,  
Development & Socialization (SEEDS) program  
is funded by the San Francisco Department of  
Early Childhood (SFDEC).*