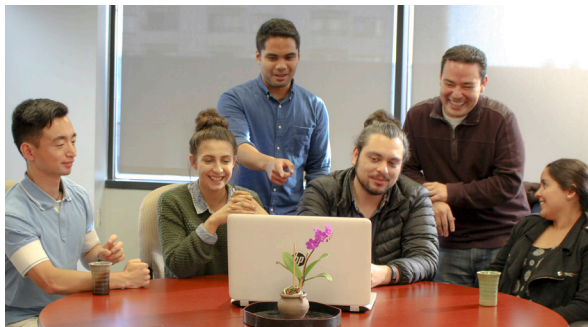


## Felton Early Psychosis Programs

re(MIND)®, BEAM, BEAM UP®, and re(MIND)® Alumni are innovative, evidence-based programs developed by the Felton Institute to diagnose and treat early psychosis and bipolar disorder. We provide treatment to adolescents and young adults so they can learn to manage their condition and move towards remission and recovery.

### Programs Include:

- (re)MIND® and BEAM Alameda
- (re)MIND® Marin
- (re)MIND® Monterey
- (re)MIND®, BEAM and BEAM UP® San Francisco
- (re)MIND® and BEAM San Mateo
- (re)MIND® Alumni



## Felton Training and Research

Professional development and behavioral health training for providers are offered in a variety of Evidence-Based Practices (EBPs). Guided by a commitment to positive outcomes and client-driven service, Felton provides innovative, patient-centered solutions to agencies in California and the nation.

## History of Innovation

Founded in 1889, Felton Institute is the oldest nonsectarian, nonprofit charitable social services provider in the City and County of San Francisco. Felton Institute is a tax-exempt organization registered 501(c)(3) nonprofit under EIN 94-1156530.

Quickly becoming the most important commercial, naval, financial, and population center of the West in the mid-1800s, San Francisco also became a center for the poor, widowed, orphaned, neglected, and the sick.



A pioneer in her day, executive director Dr. Katharine "Kitty" Felton, led the fledgling organization toward influencing positive change in the Bay Area, California, and eventually the entire country.

She is credited with giving rise to the modern-day concept of social services in the United States.

### Contact Information



1500 Franklin Street  
San Francisco, CA 94109

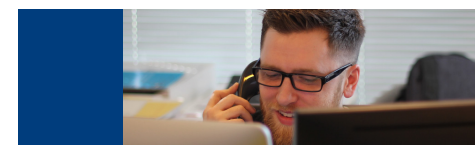
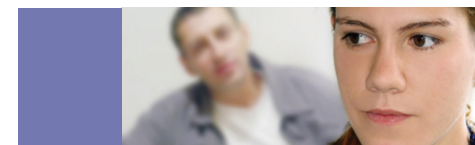
Main Phone: (415) 474-7310  
Video Phone: (415) 255-5848

[info@felton.org](mailto:info@felton.org) | [www.felton.org](http://www.felton.org)



## Felton Programs

Felton Institute responds to human needs by providing cutting edge, evidence-based social services that transform lives.



Transforming *lives* since 1889



## Children, Youth, Family and Transitional Age Youth Division

Services include early care and education, early intervention and inclusion for children birth to six years old. We offer mental health services for youth and wrap-around family support and social services to all families.

### Programs Include:

- Early Care & Education Programs (ECE)
  - Family Developmental Center (FDC)
  - Felton Learning Center (FLC)
  - Martin Luther King, Jr. Center (MLK)
  - Sojourner Truth Center (STC)
- ECE- Felton Early Autism Program (FEAP)
- ECE- Early Intervention Program (GGRC)
- ECE- Medically Fragile Program (MOLERA)
- Felton's Sunshine Community Center (SCC) at the Family Development Center
- Full Circle Family Program (FCFP)
- Healthy Families, Healthy Lives "*Familias Sanas, Vidas Sanas*" Wellness Program
- Teen Resources to Achieve Positive Practices (T-RAPP)
- Teenage Pregnancy and Parenting Program (TAPP)
- Young Family Resource Center (YFRC)

## Adult Division

Felton's Adult Division responds by placing a particular emphasis on the needs of low-income individuals and families, people living with disabilities, and the deaf. We work with people from all walks of life.

### Programs Include:

- Deaf Community Counseling Services (DCCS)
- Full Service Partnership for Adults (FSP-ACM & FSP-CARE)
- Full Service Partnership for Transitional Age Youth (FSP-TAY)
- San Francisco Suicide Prevention (SFSP)
- Transitional Age Youth (TAY) Acute Linkage Program
- Vocational Services
- Felton FSA's Works Program

## Justice Services Division

By collaborating with various local agencies and officials, Felton provides rapid response, community engagement, service linkage, and relationship-building assistance. Focus is given to those who are insecurely housed.

### Programs Include:

- Center for Reentry Excellence (CORE)
- Felton Engagement Specialist Team (FEST)
- Felton Street Case Management Team (FSCM)
- Mild-to-Moderate Program (M2M)
- Reentry Engagement Program (REP)
- Success Moving to Incarceration (SMI)
- Supporting Treatment and Reducing Recidivism (STARR)
- Young Adult Court (YAC)

## Senior Division

The Senior Division addresses the unique needs of our community's most vulnerable and fragile aging population. Our programs are designed to meet a wide range of needs while allowing seniors to age with dignity.

### Programs Include:

- Case Management for Alameda County
- Case Management for Older Adults and Adults with Disabilities
- Community Liaisons
- Community Services for Seniors and People with Disabilities at 66 Raymond, Visitacion Valley
- Flexible Subsidy Housing Program
- Foster Grandparent Program (FGP)
- Intensive Case Management and Outpatient Mental Health Services
- Long-Term Care Ombudsman Program
- Older Adult Service Team (OAST)
- Senior Community Service Employment Program (SCSEP)
- Senior Companion Program (SCP)
- Senior Full Service Wellness Program (Mental Health Services Act)
- The Tech Squad
- Visitacion Valley Senior Health & Wellness

