
INNOVATION IN SOCIAL SERVICE



OUR *MISSION*

Rooted in equity, Felton Institute transforms quality of life and promotes social justice to accelerate community led change.

OUR *VISION*

Drive positive and sustainable community led change where all have equitable access to innovative, high-quality, evidence-informed services.



CORE SERVICE AREAS

Give to an Agency that Transforms Lives felton.org/donate
Follow [@felton.institute](https://twitter.com/felton.institute) on Social Media



EARLY CARE & EDUCATION



MENTAL HEALTH



FAMILY SUPPORT



JUSTICE SERVICES



TRAINING, RESEARCH & EVALUATION



AGING SERVICES



1 CHILDREN, YOUTH, AND FAMILY

2 TRANSITIONAL AGE YOUTH

3 ADULTS

4 SENIORS



LIFE-TRANSFORMING PROGRAMS

Children, Youth, Family, & TAY

Building Stronger Families and Communities

Services include early care and education, early intervention and inclusion for children birth to six years old. We offer mental health services for youth and wrap-around family support and social services to all families.

CYF Programs Include:

- ECE - Family Developmental Center (FDC)
- ECE - Felton Early Autism Program (FEAP)
- ECE - Felton Learning Center (FLC)
- ECE - Early Intervention Program (GGRC)
- ECE - Martin Luther King Center (MLK)
- ECE - Medically Fragile Program (MOLERA)
- ECE - Sojourner Truth Center (STC)
- Felton's Sunshine Community Center (SCC) @ FDC
- Full Circle Family Program (FCFP)
- Healthy Families, Healthy Lives "Familias Sanas, Vidas Sanas" Wellness Program
- Teen Resources to Achieve Positive Practices (T-RAPP)
- Teenage Pregnancy and Parenting Program (TAPP)
- Young Family Resource Center (YFRC)

Adult Division

Facilitating Opportunities for At-Risk Populations

Felton's Adult Division responds by placing a particular emphasis on the needs of low-income individuals and families, people living with disabilities, and the deaf. We work with people from all walks of life.

Adult Programs Include:

- Deaf Community Counseling Services (DCCS)
- Full Service Partnership for Adults (FSP-ACM & FSP-CARE)
- Full Service Partnership for Transitional Age Youth (FSP-TAY)
- San Francisco Suicide Prevention (SFSP)
- Transitional Age Youth (TAY) Acute Linkage Program
- Vocational Services Felton FSA's Works Program

Felton Early Psychosis Division

Intervening Early and Focusing on Recovery

Innovative, evidence-based programs to diagnose and treat early psychosis and bipolar disorder. We provide treatment to adolescents and young adults so they can learn to manage their condition and move towards remission and recovery.

- (re)MIND® | BEAM Alameda • (re)MIND® Monterey
- (re)MIND® | BEAM | BEAM UP® SF • (re)MIND® Marin
- (re)MIND® | BEAM | (re)MIND® Alumni San Mateo

Felton Training, Research and Evaluation Division

Pioneering New Strategies for Social Work

Professional development and behavioral health training for providers are offered in a variety of Evidence-Based Practices (EBPs) to agencies in California and the nation.

Justice Services Division

Forging a Pathway to Stability

By collaborating with various local agencies and officials, Felton provides rapid response, community engagement, service linkage, and relationship-building assistance. Focus is given to those who are insecurely housed.

Justice Programs Include:

- Center for Reentry Excellence (CORE)
- Felton Engagement Specialist Team (FEST)
- Felton Street Case Management Team (FSCM)
- Mild-to-Moderate Program (M2M)
- Reentry Engagement Program (REP)
- Success Moving to Incarceration (SMI)
- Supporting Treatment and Reducing Recidivism (STARR)
- Young Adult Court (YAC)

Senior Division

Championing the Needs of Older Adults

The Senior Division addresses the unique needs of our community's most vulnerable and fragile aging population. Our programs are designed to meet a wide range of needs while allowing seniors to age with dignity.

Senior Programs Include:

- Case Management for Alameda County
- Case Management for Older Adults and Adults with Disabilities
- Community Liaisons
- Community Services for Seniors and People with Disabilities at 66 Raymond, Visitation Valley
- Flexible Subsidy Housing Program
- Foster Grandparent Program (FGP)
- Intensive Case Management and Outpatient Mental Health Services
- Long-Term Care Ombudsman Program
- Older Adult Service Team (OAST)
- Senior Community Service Employment Program (SCSEP)
- Senior Companion Program (SCP)
- Senior Full Service Wellness Program (Mental Health Services Act)
- Tech Squad
- Visitation Valley Senior Health & Wellness

FELTON *service area*



PROGRAM SITES & OFFICES

Operations and programs are spread over five counties: Alameda, Marin, Monterey, San Francisco, and San Mateo, responding to the belief that those in crisis must have access to social services.

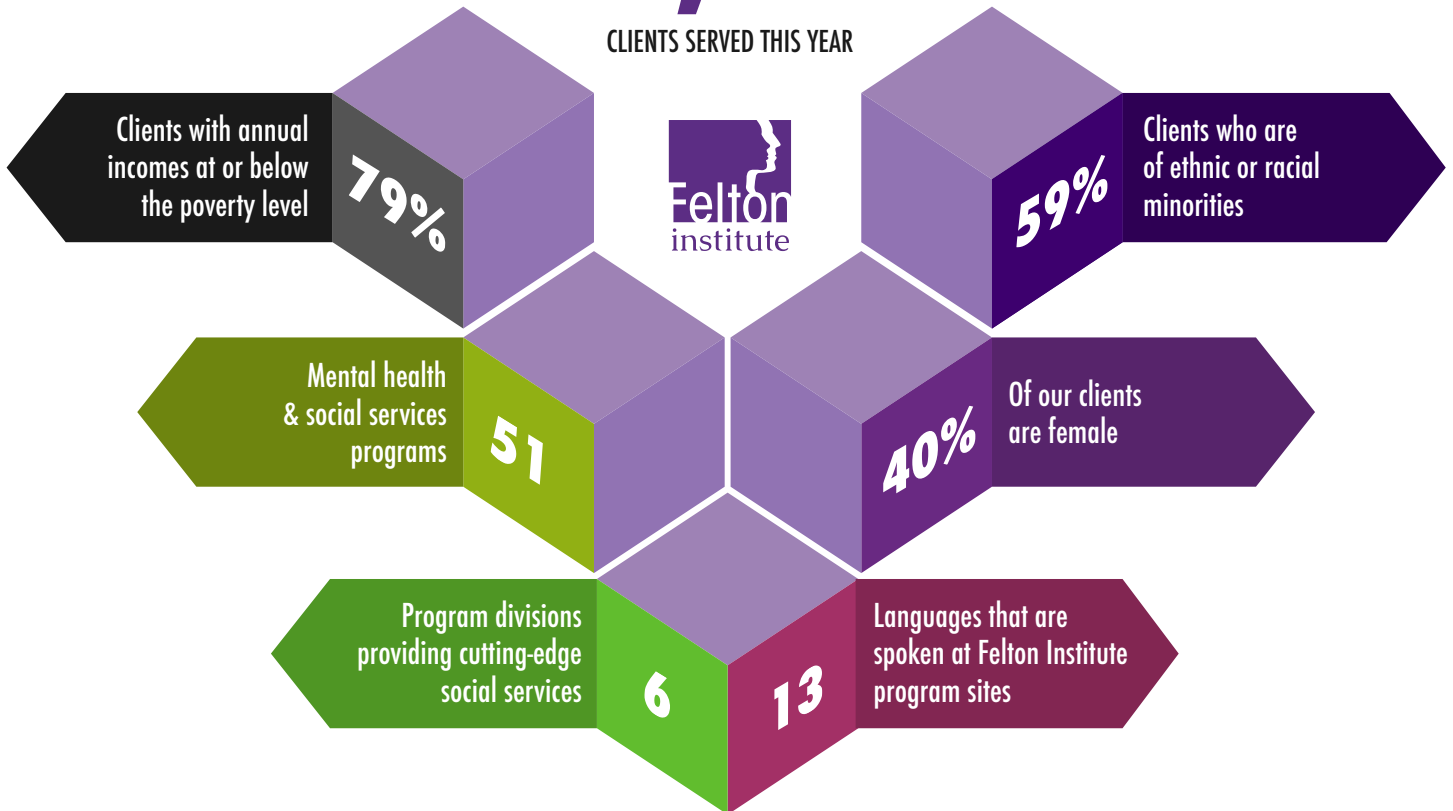
WIDE ARRAY OF SOCIAL SERVICES

Our services are comprehensive with an emphasis on the needs of low-income families, children, the elderly, ethnic minorities, justice impacted individuals, and people living with mental and physical disabilities.

WHO DOES FELTON *serve* ?

87,428

CLIENTS SERVED THIS YEAR



UNDERSERVED COMMUNITIES

Too often individuals with income below the poverty line are dealing with complex social and emotional challenges. Felton offers a comprehensive network of support for this community.

DIVERSE DEMOGRAPHIC

Our community embodies cultural, economic, social, and ethnic diversity. On average, 79% of our clients are at or below the poverty level, and about 59% are of ethnic or racial minorities.

EARLY PSYCHOSIS PROGRAM

The Felton Early Psychosis Programs currently operates in five counties, serving over 250 clients per year. It is the largest community-based schizophrenia treatment program in the USA.

FEMALE CLIENTS

On average across our programs, around 40% of the population Felton serves are female, offering equal opportunity for women to build on their inherent strengths and develop self-sufficiency.

SIX SEPARATE DIVISIONS

Felton Institute consists of six divisions:

- Children, Youth, Family & Transitional Age Youth
- Adult • Justice Services • Senior • Early Psychosis
- Training, Research & Evaluation

LANGUAGE ACCESS

Felton honors the cultural sensitivity of our clients and responds to the call with staff who speak a wide variety of languages. This year, 13 languages are represented across our 51 programs.