



2020 *diversity* REPORT

At Felton Institute we place a high value on diversity and the ***importance of workplace community and inclusion***. We celebrate the strength we have as an organization by having board and staff members that are reflective of the populations we serve.

There is ***diverse representation*** in our leadership and senior staff and that informs our work and positively impacts our mission of serving underserved communities in Northern California.



FELTON INSTITUTE
innovation in social services



PHOTO: Felton clients at the Alameda site are often greeted with genial smiles from HR Administrative Assistant Cecilia "CeCe" Johnson and Corletha "Coco" Jefferson.

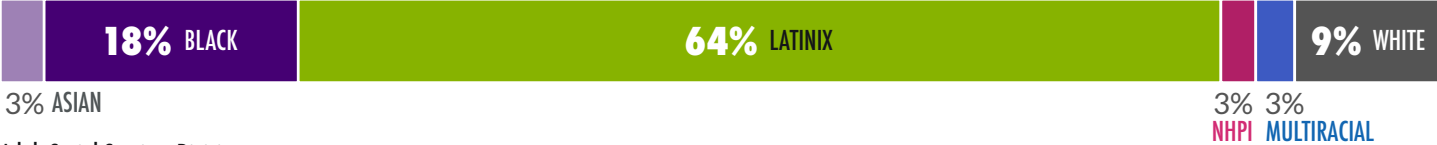
FELTON & OUR VALUE OF DIVERSITY

*Data collected on March 1st 2021 by Felton Institute's Human Resources department.

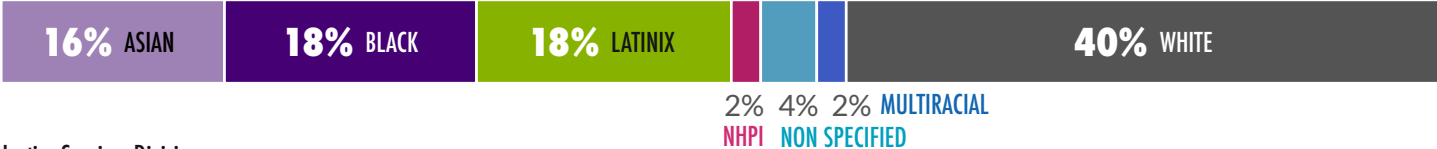


ETHNICITY BY DIVISION

Children, Youth, Family, and Transitional Age Youth Division (CYF & TAY)



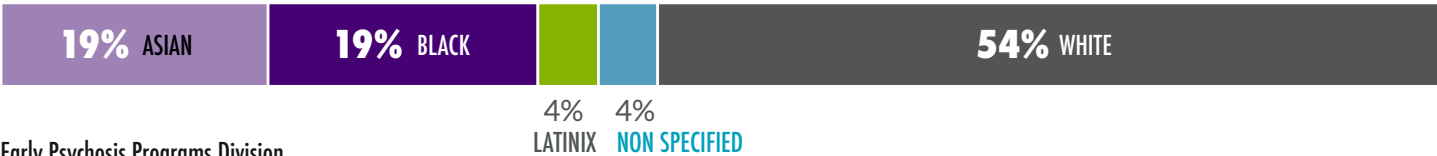
Adult Social Services Division



Justice Services Division



Senior Social Services Division



Early Psychosis Programs Division



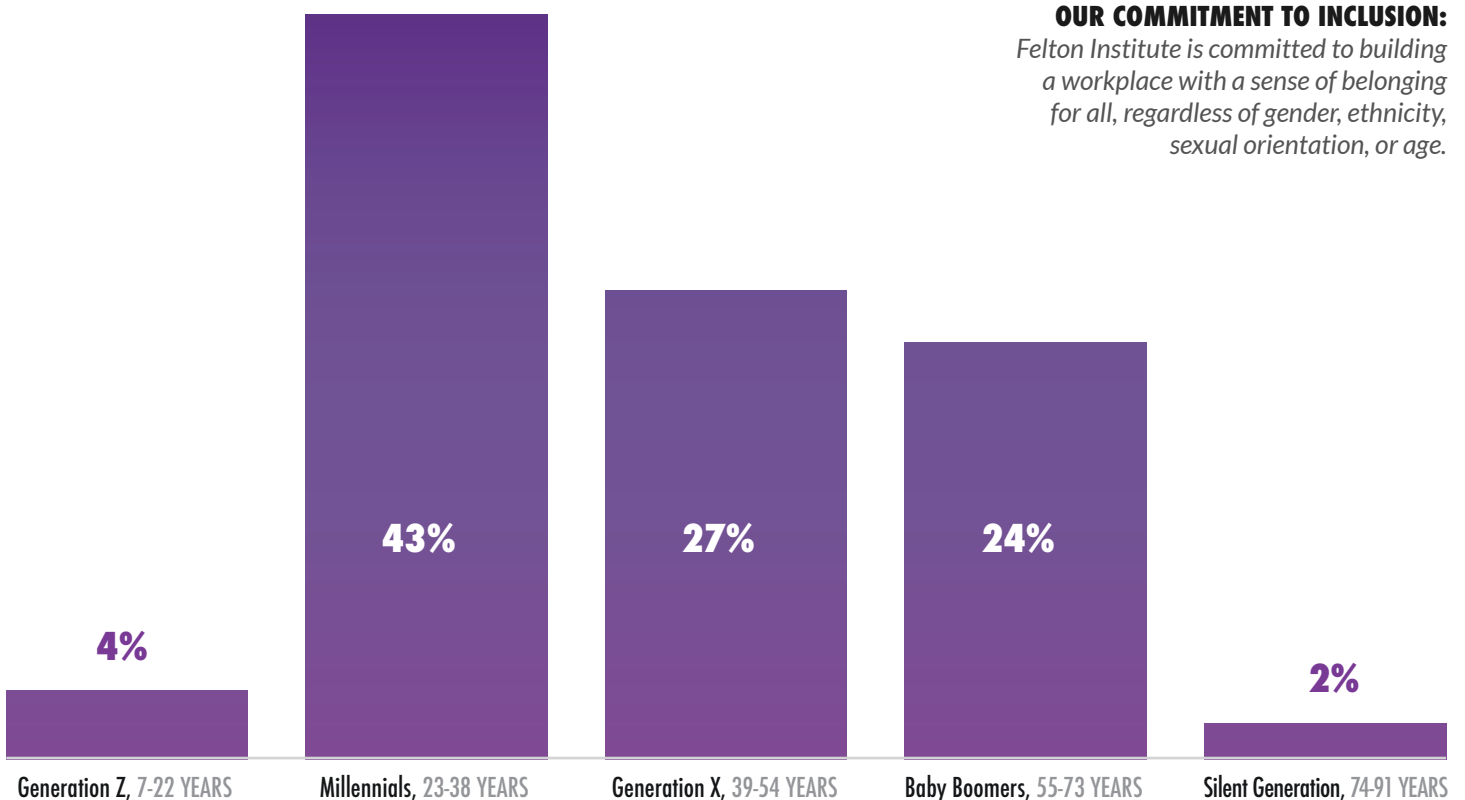
Administration





Felton Institute's workforce consists of 642 individuals including 362 Employees, 45 older adults in SCSEP, 30 Contractors and 205 Volunteers.

STAFF BY AGE GROUPS

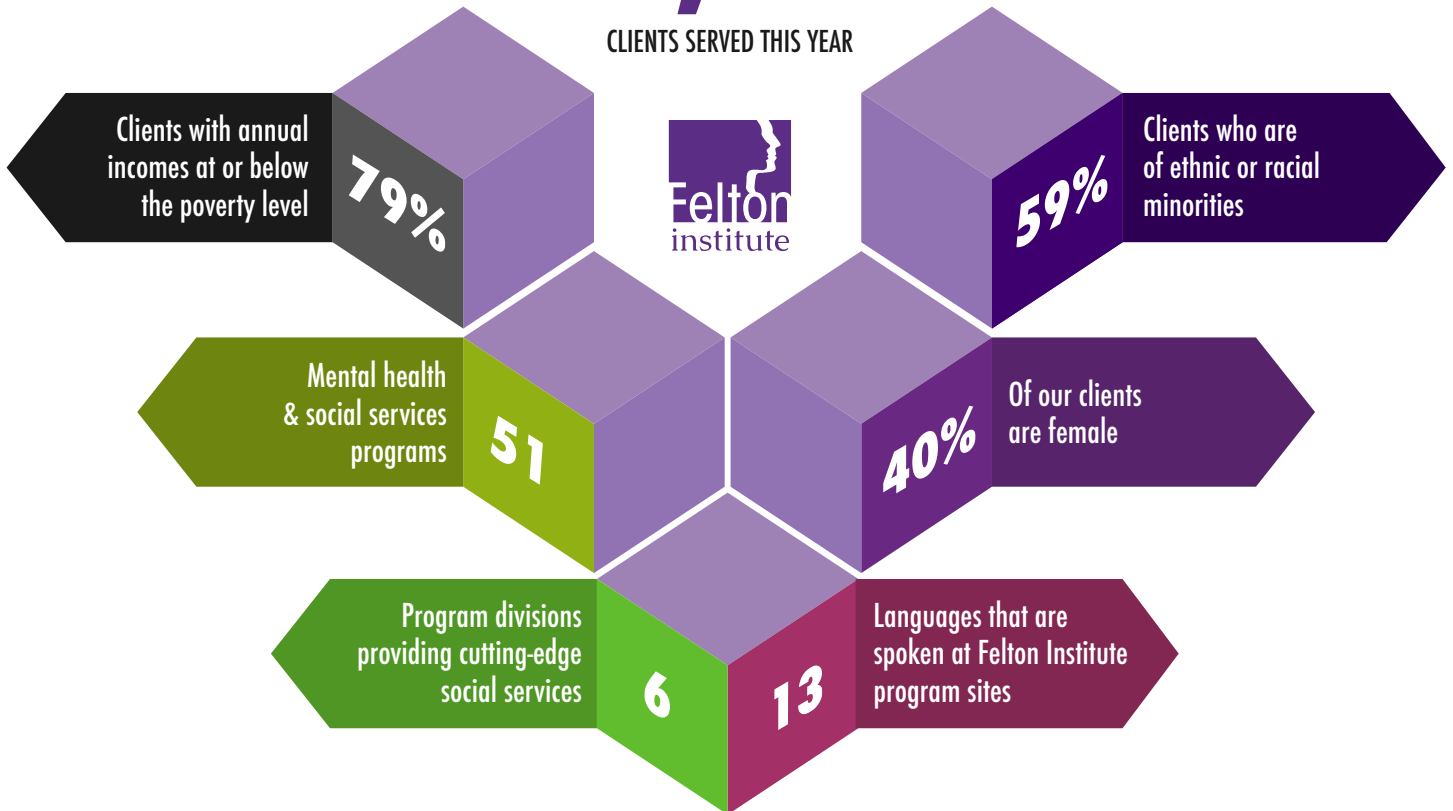


OUR COMMITMENT TO INCLUSION:
Felton Institute is committed to building a workplace with a sense of belonging for all, regardless of gender, ethnicity, sexual orientation, or age.

WHO DOES FELTON *serve* ?

87,428

CLIENTS SERVED THIS YEAR



UNDERSERVED COMMUNITIES

Too often individuals with income below the poverty line are dealing with complex social and emotional challenges. Felton offers a comprehensive network of support for this community.

DIVERSE DEMOGRAPHIC

Our community embodies cultural, economic, social, and ethnic diversity. On average, 79% of our clients are at or below the poverty level, and about 59% are of ethnic or racial minorities.

EARLY PSYCHOSIS PROGRAM

The Felton Early Psychosis Programs currently operates in five counties, serving over 250 clients per year. It is the largest community-based schizophrenia treatment program in the USA.

FEMALE CLIENTS

On average across our programs, around 40% of the population Felton serves are female, offering equal opportunity for women to build on their inherent strengths and develop self-sufficiency.

SIX SEPARATE DIVISIONS

Felton Institute consists of six divisions:

- Children, Youth, Family & Transitional Age Youth
- Adult • Justice Services • Senior • Early Psychosis
- Training, Research & Evaluation

LANGUAGE ACCESS

Felton honors the cultural sensitivity of our clients and responds to the call with staff who speak a wide variety of languages. This year, 13 languages are represented across our 51 programs.