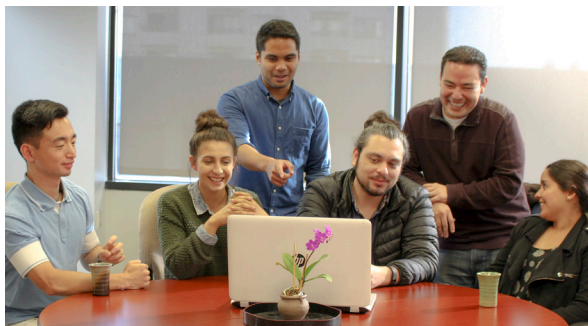


## Felton Early Psychosis Programs

In 2006, Felton partnered with a pioneering group of researchers from UCSF. The result was the Felton Early Psychosis Program, an innovative, strengths-based treatment model for community settings with a mission to remit schizophrenia effectively.

## Bipolar Early Assessment and Management (BEAM)

BEAM is transforming the treatment of recent onset Bipolar and other mood disorders by intervening early with evidence-based, culturally competent assessment, diagnosis, and interventions. The program introduces the client and their families to skills that help manage the episodic nature of the disorders.



## Felton Training and Research

Felton Training and Research offers professional development and behavioral health training for providers in a variety of Evidence-Based Practices (EBPs) with Motivational Care Management (MCM), Motivational Interviewing (MI), and Cognitive Behavioral Therapy for Psychosis (CBTp), and other best practices for the social service environment.

## History of Innovation

Founded in 1889, Felton Institute is the oldest nonsectarian, nonprofit charitable social services provider in the City and County of San Francisco. Felton Institute is a tax-exempt organization registered 501(c)(3) nonprofit under EIN 94-1156530.

Quickly becoming the most important commercial, naval, financial, and population center of the West in the mid-1800s, San Francisco also became a center for the poor, widowed, orphaned, neglected, and the sick.



A pioneer in her day, executive director Dr. Katharine "Kitty" Felton, led the fledgling organization toward influencing positive change in the Bay Area, California, and eventually the entire country.

She is credited with giving rise to the modern-day concept of social services in the United States.

## Contact Information



1500 Franklin Street  
San Francisco, CA 94109

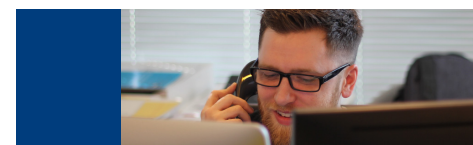
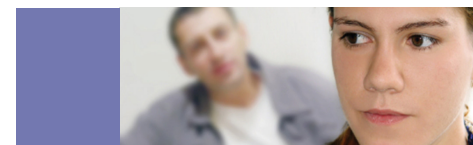
Main Phone: (415) 474-7310  
Video Phone: (415) 255-5848

[info@felton.org](mailto:info@felton.org) | [www.felton.org](http://www.felton.org)



## Felton Programs

Felton Institute responds to human needs by providing cutting edge, evidence-based social services that transform lives.



Transforming *lives* since 1889



## Children, Youth and Family Division (CYF)

Felton's CYF provides comprehensive early care and education, inclusion, and early intervention services for children birth to six years old, including children with special needs.

### Programs Include:

- Child Care Food Program (CACFP)
- Developmental Education and Parenting Program (DEPP)
- Early Care & Education Programs (ECE)
  - Family Developmental Center
  - Felton Learning Center
  - Martin Luther King, Jr. Center
  - Sojourner Truth Center
- Felton Early Autism Program (FEAP)
- Full Circle Family Program (FCFP)
- Healthy Families, Healthy Lives "Familias Sanas, Vidas Sanas" Wellness Program
- Infant Development Program (GGRC)
- Medically Fragile Infant/Toddler/ Preschool Program (MOLERA)
- Realizing Employment and Creating Hope (REACH)
- Teenage Pregnancy and Parenting (TAPP)
- Teen Resources to Achieve Positive Practices (T-RAPP)
- Young Family Resource Center (YFRC)

## Adult Division

Felton's Adult Division responds by placing special emphasis on the needs of low-income individuals and families, people living with disabilities, those suffering from substance abuse, and assisting with justice-related issues.



### Programs Include:

- Deaf Community Counseling Services (DCCS)
- Early Crisis Intervention and Eviction Assistance (EAP)
- Felton Engagement Specialist Team (FEST)
- Felton | Family Service Agency of San Francisco's Works Program
- Full Service Partnership — Adult Care Management Program (FSP-ACM)
- Full Service Partnership – Comprehensive Adult Recovery and Engagement Program (FSP-CARE)
- Full Service Partnership for Transitional Age Youth (TAY)
- Law Enforcement Assisted Diversion Program (LEAD SF)
- Promoting Recovery and Services for the Prevention of Recidivism (PRSPR)
- Reconnecting All Through Multiple Pathways (RAMP)
- San Francisco Suicide Prevention (SFSP)
- Young Adult Court (YAC)

## Senior Division

The Senior Division addresses the special needs of our community's most vulnerable and fragile aging population. Our programs are designed to meet a wide range of needs, while allowing seniors to age with dignity, to thrive and to live a life of purpose.

### Programs Include:

- Case Management for Older Adults and Adults with Disabilities
- Community Integration Services/Older Adult Day Support Center
- Community Liaisons Program at the DAAS Service Hub
- Community Services for Seniors and People with Disabilities at 66 Raymond, Visitacion Valley
- Economic Security Center for Older Adults (ESC)
- Foster Grandparent Program (FGP)
- Geriatric Outpatient Mental Health Services
- LGBTQ Seniors
- Long-term Care Ombudsman Program
- Older Adult Service Team (OAST)
- Senior Companion Program (SCP)
- Senior Community Service Employment Program (SCSEP)
- Senior Full Service Wellness Program (Mental Health Act)
- Visitacion Valley Senior Health & Wellness

